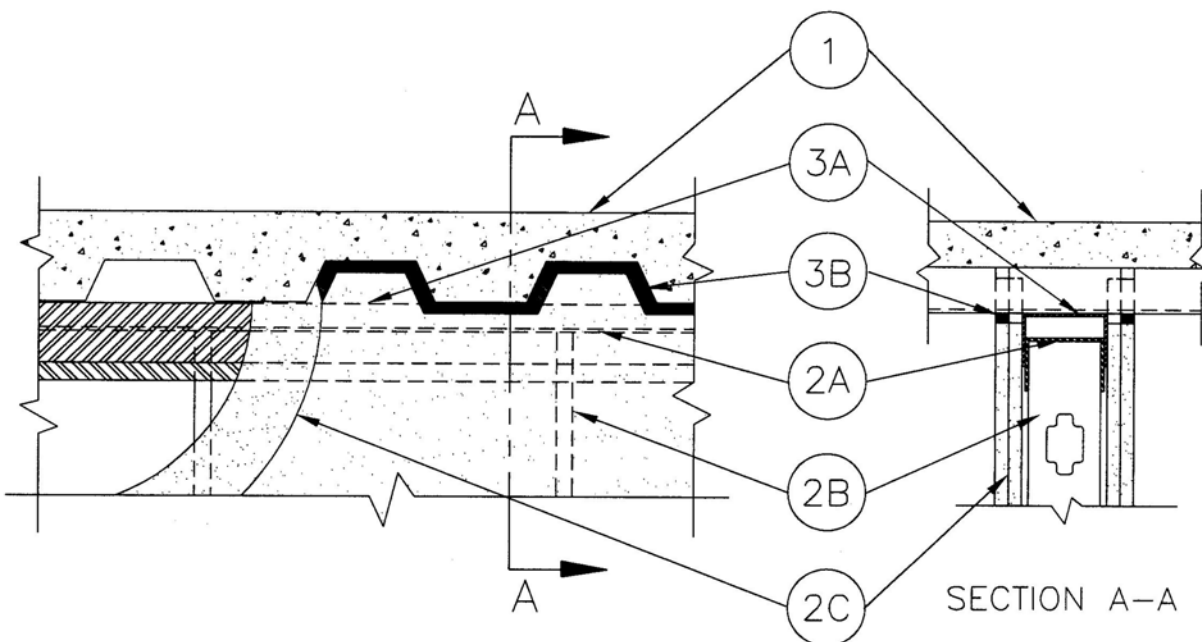




Assembly Ratings – 1 & 2 Hr (See Item 2)
Nominal Joint Width – 3/4 in. (19 mm)
Class II - Movement Capabilities – 33% Comp. or Ext.

HW-D-0024

ANSI/UL2079	CAN/ULC S115
Assembly Ratings — 1 & 2 Hr (See Item 2)	F Ratings — 1 & 2 Hr (See Item 2)
Nominal Joint Width — 3/4 in. (19 mm)	FT Ratings — 1 & 2 Hr (See Item 2)
Class II Movement Capabilities — 33% Compression or Extension	FH Ratings — 1 & 2 Hr (See Item 2)
	FTH Ratings — 1 & 2 Hr (See Item 2)
	Nominal Joint Width — 3/4 in. (19 mm)
	Class II Movement Capabilities — 33% Compression or Extension



1. **Floor Assembly** – The fluted steel deck/concrete floor assembly shall be constructed of the materials and in the manner described in the individual Floor-Ceiling Design in the UL Fire Resistance Directory and shall include the following construction features:
 - A. **Steel Floor and Form Units*** – Max 3 in. (76 mm) deep galv fluted units.
 - B. **Concrete** – Min 2-1/2 in. (64 mm) thick reinforced concrete, as measured from the top
 - C. **Concrete**, as measured from the top plane of the floor units.

- 1A. **Roof Assembly** – (Not Shown) – As an alternative to the floor assembly, a fire rated fluted steel deck roof assembly may be used. The roof assembly shall be constructed of the materials and in the manner described in the individual P900 Series Roof-Ceiling Design in the UL Fire Resistance Directory. The hourly rating of the roof assembly shall be equal to or greater than the hourly rating of the wall assembly and shall include the following construction features:
- A. **Steel Roof Deck** – Max 3 in. (76 mm) deep galv steel fluted roof deck.
 - B. **Roof Insulation** – Min 2-1/4 in. (64 mm) thick poured insulated concrete, as measured from the top plane of the floor units.
 - C. **Roof Covering*** – Hot-mopped or cold-application materials compatible with insulated
2. **Wall Assembly** – The 1 or 2 hr fire rated gypsum board/steel stud wall assembly shall be constructed of the materials and in the manner described in the individual U400 - Series Wall or Partition Design in the UL Fire Resistance Directory and shall include the following construction features:
- A. **Steel Floor and Ceiling Runners** – Floor and ceiling runners of wall assembly shall consist of galv steel channels sized to accommodate steel studs (Item 2B). When U-shaped deflection channel (Item 3A) is used, ceiling runner installed within the deflection channel with 1 in. (25 mm) gap maintained between the top of ceiling runner and top of deflection channel. When deflection channel is not used, ceiling runner is secured to valleys of steel floor units (Item 1A) with steel fasteners or by welds spaced max 24 in. OC.
 - A1. **Light Gauge Framing* – Slotted Ceiling Runner** – As an alternate to the ceiling runner in Item 2A, slotted ceiling runner to consist of galv steel channel with slotted flanges sized to accommodate steel studs (Item 2B). Slotted ceiling runner installed perpendicular to direction of fluted steel floor units and secured to valleys with steel fasteners spaced max 24 in. (610 mm) OC. When slotted ceiling runner is used, deflection channel (Item 3A) shall not be used.
BRADY CONSTRUCTION INNOVATIONS INC.,
DBA SLIPTRACK SYSTEMS, INC – SLP-TRK
CLARKWESTERN BUILDING SYSTEMS INC. – Type SLT, SLT-H
MARINO/WARE, DIV OF WARE INDUSTRIES INC – Type SLT
METAL-LITE INC. – The System
RAM SALES LLC – Ram Slotted Track
SCAFCO STEEL STUD MANUFACTURERS CO.
TELLING INDUSTRIES LLC – True-Action Deflection Track
 - A2. **Light Gauge Framing* – Vertical Deflection Ceiling Runner** – As an alternate to the ceiling runner in Item 2A and 2A1, vertical deflection ceiling runner to consist of galv steel channel with slotted vertical deflection clips mechanically fastened within runner. Slotted clips, provided with step bushings, for permanent fastening of steel studs. Vertical deflection ceiling runner installed perpendicular to direction of fluted steel deck and secured to valleys with steel masonry anchors spaced max 24 in. (610 mm) OC. When vertical deflection ceiling runner is used, deflection channel (Item 3A) shall not be used.
THE STEEL NETWORK INC. – VertiTrack VTD362, VTD400, VTD600, and VTD800
 - A3. **Light Gauge Framing* – Notched Ceiling Runner** – As an alternate to the ceiling runners in Item 2A, 2A1 or 2A2, notched ceiling runners to consist of C-shaped galv steel channel with notched return flanges sized to accommodate steel studs (Item 2B). Notched ceiling runner installed perpendicular to direction of fluted steel deck and secured to valleys with steel masonry anchors spaced max 24 in. (610 mm) OC. When notched ceiling runner is used, deflection channel (Item 3A) shall not be used.
OLMAR SUPPLY INC – Type SCR

- B. **Studs** – Steel studs to be min 3-5/8 in. (92 mm) wide. Studs cut 1/2 to 3/4 in. (13 to 19 mm) less in length than assembly height. Studs attached to ceiling runner with sheet metal screws a min of 1/2 in. (13 mm) below bottom of deflection channel, when deflection channel is used. When deflection channel is not used, studs shall not be secured to ceiling runner. When slotted ceiling runner is used (Item 2A1), steel studs secured to slotted ceiling runner with No. 8 by 1/2 in. (13 mm) long wafer head steel screws at midheight of slot on each side of wall. When vertical deflection ceiling runner (Item 2A2) is used, steel studs secured to slotted vertical deflection clips, through bushings, with steel screws at midheight of slot. Stud spacing not to exceed 24 in. (610 mm) OC.
- C. **Gypsum Board*** – Gypsum board to be installed to a min total thickness of 5/8 or 1-1/4 in. (16 or 32 mm) on each side of the wall for a 1 or 2 hr fire rated wall, respectively. Wall to be constructed as specified in the individual Wall and Partition Design in the UL Fire Resistance Directory, except that the gypsum board is cut to fit the contour of the steel floor units with a nom 3/4 in. (19 mm) gap. The screws attaching the gypsum board to studs at the top of the wall shall be located 1 in. (25 mm) below the bottom of the deflection channel when deflection channel is used. When deflection channel is not used, the screws attaching the gypsum board to studs at the top of the wall shall be located 1 in. (25 mm) below the bottom of the ceiling runner.
- The hourly fire rating of the joint system is dependent on the hourly fire rating of the wall.**
3. **Joint System - Max separation between bottom of floor and top of wall is 3/4 in. (19 mm). The joint system is designed to accommodate a max 33 percent compression or extension from its installed width.** The joint system consists of a deflection channel and a fill material, as follows:
- A. **Deflection Channel** – (Optional) – A nom 3-5/8 in. (92 mm) wide by min 2 in. (51 mm) deep min 24 ga. steel U-shaped channel. Deflection channel installed perpendicular to direction of fluted steel deck and secured to valleys of steel floor units (Item 1A) with steel fasteners or by welds spaced max 24 in. (610 mm) OC. The ceiling runner (Item 2A) is installed within the deflection channel to maintain a 1 in. (25 mm) gap between the top of the ceiling runner and the top of the deflection channel. The ceiling runner is not fastened to the deflection channel.
- B. **Fill Void or Cavity Material* – Sealant** – Min 5/8 in. (16 mm) thickness of fill material installed on each side of the wall between the top of the gypsum board and all surfaces of the steel floor units, flush with each surface of gypsum board.
- Passive Fire Protection Partners** – 3600EX, 4100NS, 4800DW

*Bearing the UL Classification Marking